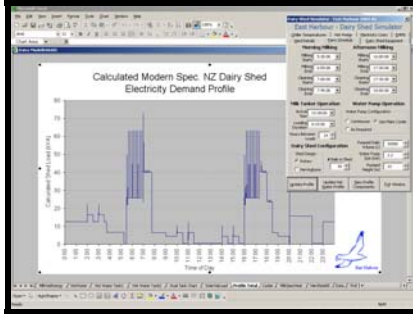




East Harbour



East Harbour Management Services

can assist you with your

Primary Sector (Dairy) Energy Projects

East Harbour's staff have technical and commercial energy experience that they can bring to your projects.

East Harbour's project advisors and consultants can assist you with:

- Strategic advisory and support
- Management of the investigation and development of energy projects (solar, bioenergy, wind, and energy efficiency)
- Energy auditing and advisory
- Commercial electricity pricing and network charges
- Energy monitoring and management
- Commercialisation of projects

East Harbour's staff have extensive experience in evaluation and implementation of energy based technologies within the New Zealand industry. The most recent addition to this skill base is the development of a computer model for comparing electricity use patterns in dairy sheds. This technology is used by East Harbour to evaluate the benefits of dairy shed energy technologies and potential effect on electricity use for end users and suppliers of milking equipment, as well as energy supply and network companies.

With its extensive involvement in the activities of the Solar Industries Association, East Harbour has expertise to evaluate the economics of solar water heating with respect to energy savings available to dairy farmers. Hot water temperature and availability is of critical importance to dairy farmers and sharemilkers, as cleanliness influences the grading of milk produced.

The application of a small windmill, including direct pumping of water and shared micro-grid connection, has been investigated with a view to reducing dairy shed electricity demand and investment in network infrastructure. A shared small wind turbine has potential to improve security of supply to clustered dairy farms.

More recently, East Harbour has been investigating the use of effluent fuelled digestors for electricity and heat generation on dairy farms. The economics of effluent disposal and energy supply to milking sheds are considered with respect to the economics of embedded electricity generation from biogas. International developments in waste digestion technology and case studies give indication as to the suitability for application in New Zealand.

East Harbour has access to an extensive source of information through the Energy Library (an associate company). It is able to efficiently collate technical and other information to meet customer requirements.

East Harbour has developed a portal search engine for web-based energy information access. The EnergyInfoNZ site (www.energyinfonz.co.nz) has links to fuel and energy resources.

Staff

East Harbour's key person with a primary sector focus is Brian Cox. Brian is ably supported by Tim Armstrong and Stephen Ward.

Please contact Brian for further information or with any enquiries that you may have.

Email:	brian.cox@eastharb.co.nz
Address:	Level 8, CMC Building 89 Courtenay Place Wellington
Phone:	0-4-385 3398
Fax:	0-4-385 3397